

Specifications

| CRI | Ambient Temp (F) | Mounting Bracket | Housing | Lens | Voltage | IP Rating | Efficacy | Gross Weight | Hardware | Beam Angle | Warranty | Case Quantity |
|-----|------------------|------------------|----------------------|----------------|----------------------------|-----------|----------|--------------|-----------------|------------|----------|---------------|
| 80 | -40° - 140° | stainless steel | copper-free aluminum | tempered glass | AC 100-277 V DC 12-48 V | IP66 | 140 LM/W | 40.8 lbs | stainless steel | 120° | 6 years | 1 pcs |

select your fixture

| Part Number | Color Temp | Consumption | Lumen Output | Dimensions |
|-------------------|------------|-------------|--------------|----------------------|
| GI-EPI-2C175HO-G4 | 5000K | 50W | 7,000 | 5.5" x 23.3" x 5.22" |
| GI-EPI-4C175-G4 | 5000K | 40W | 5,600 | 46.1" X 5.5" X 5.22" |
| GI-EPI-4C250-G4 | 5000K | 60W | 8,400 | 46.1" X 5.5" X 5.22" |
| GI-EPI-4C400-G4 | 5000K | 80W | 12,000 | 46.1" X 5.5" X 5.22" |
| GI-EPI-4D400-G4 | 4000K | 80W | 12,000 | 46.1" X 5.5" X 5.22" |
| GI-EPI-4C400HO-G4 | 5000K | 100W | 14,000 | 46.1" X 5.5" X 5.22" |

Certifications

Marking UL844 (North American)
Class I, Division 1, Groups C, D
Class I, Division 2, Groups A, B, C, D
Marking UL844 (North American)
Class II, Division 1, Groups E, F, G
Class II, Division 2, Groups F, G
Class III

Marking ATEX
II2 G Ex db IIB T4 Gb
II2 D Ex tb IIIC T63.5°C Db IP66
Marking IECEx
Ex db IIB T4 Gb
Ex tb IIIC T63.5°C Db IP66

Marine Marking
UL 1598
UL1598A, ABS

Other Rating
IP66, IK10

Optional mounts

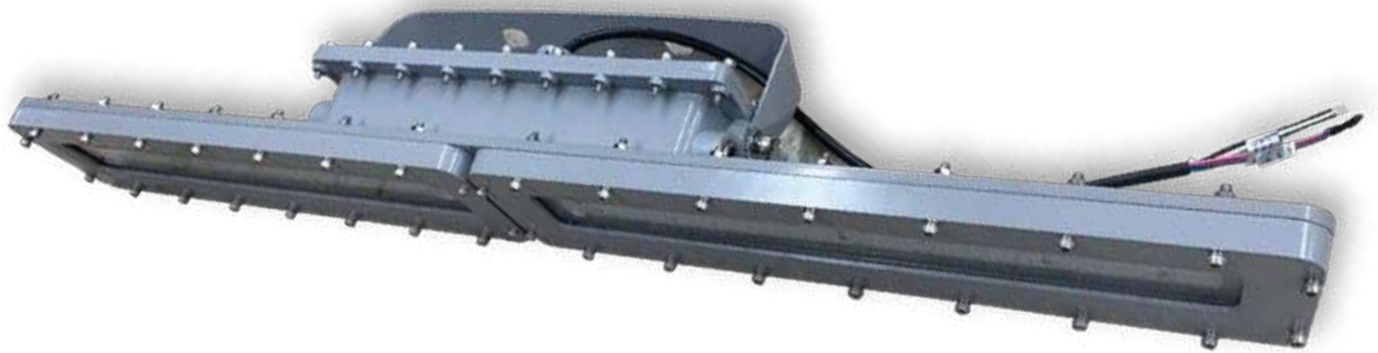
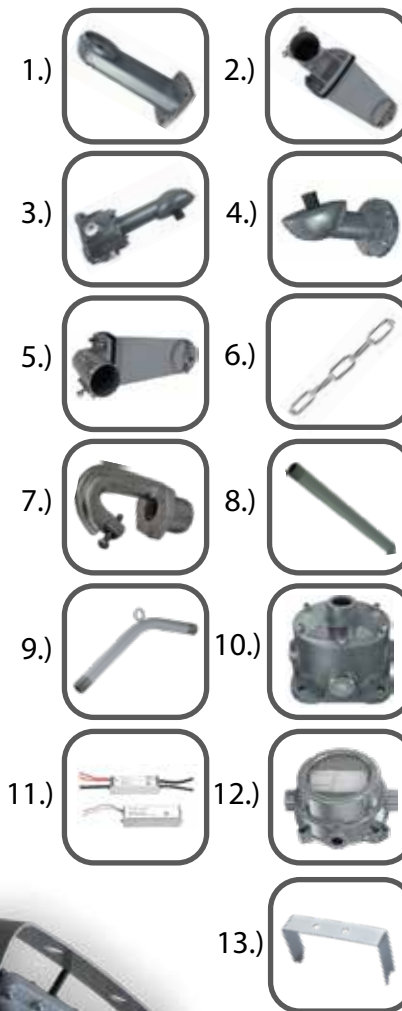
| Accessories Part Number | Description |
|-------------------------|---------------------------------|
| 1.) GI-ACC-EPSMA | Surface Mounting Arm |
| 2.) GI-ACC-EP25S | 25° Pole Support |
| 3.) GI-ACC-EP90WJB | 90° Wall Support & Junction Box |
| 4.) GI-ACC-EP25WS | 25° Wall Support |
| 5.) GI-ACC-EP90S | 90° Pole Support |

Optional accessories

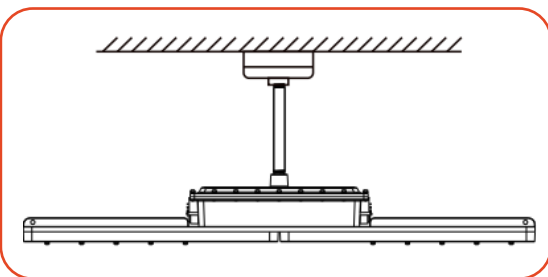
| Accessories Part Number | Description |
|-------------------------|------------------------------------|
| 6.) GI-ACC-EPC | Pendant Chain |
| 7.) GI-ACC-EPH | Hook Mount |
| 8.) GI-ACC-EPSSP | Straight Swing Pipe |
| 9.) GI-ACC-EPPB | Bended Pipe |
| 10.) GI-ACC-EPJB | Junction Box |
| 11.) GI-ACC-EPED15 | 15W Emergency battery + controller |
| 12.) GI-ACC-EPPS | photocell sensor |

Included accessories

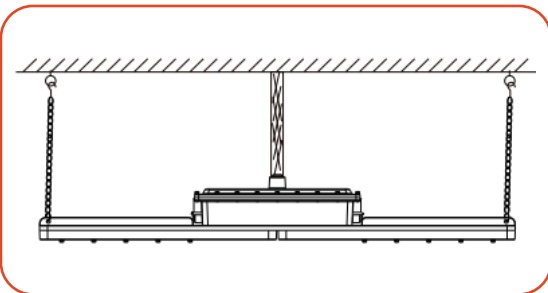
| Accessories Part Number | Description |
|-------------------------|----------------------|
| 13.) GI-ACC-EPUB | U-bracket / Trunnion |



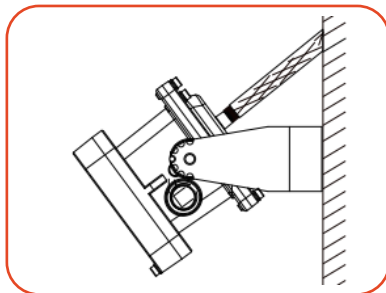
Pole Pendant Mounting:



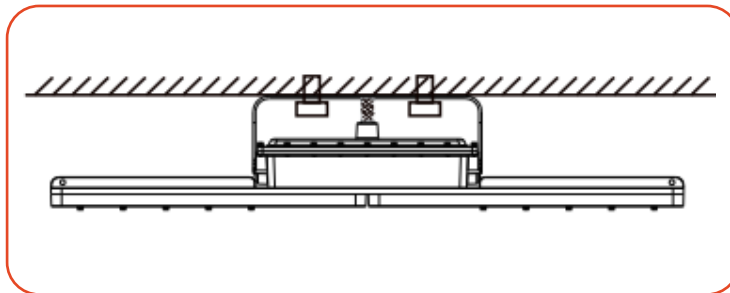
Chain Mounting:



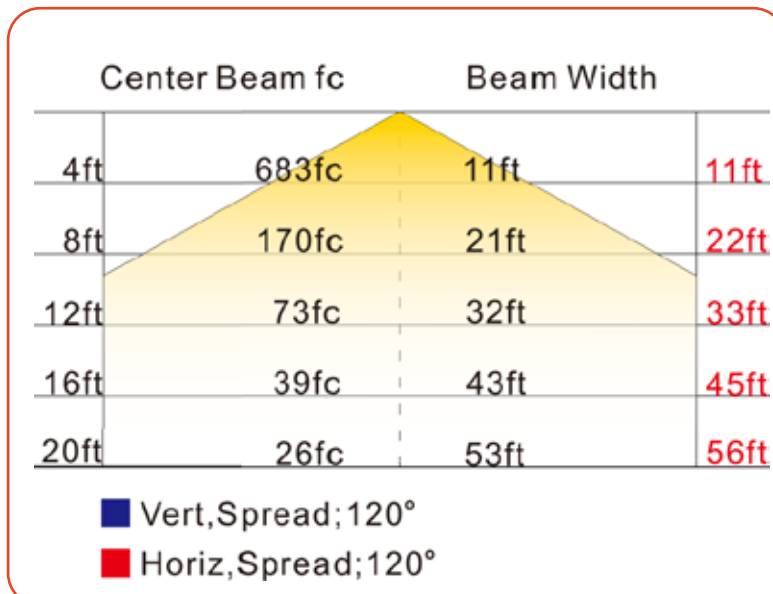
Wall Mounting:



Ceiling Mounting:



Distributional Diagram



Features

- Rated for high temperatures, humidity, dust and vapor locations
- Light weight design
- Heavy duty & high impact resistant
- 0-10V Dimmable
- Smooth housing allows for easy cleaning/maintenance
- 10KvA Surge protection

Not all product variations listed on this page may be DLC qualified. Visit www.designlights.org/search to confirm qualification.