

specifications

CRI	Consumption	Lumen Output	Efficacy	Finish	Lens	Hardware	L70 hours	SP	Ambient Temp (F)	Power Factor	UL listing	IK Rating	THD
>70	60W / 75W / 90W selectable	60W - 8,800LM 75W - 10,600LM 90W - 12,800LM	142 LM / W	white	PC	stainless steel	50,000	10 KV optional	-22° - 122°	> 0.9	IP65	IK08	< 0.2

Part Number	Color Temp	Voltage
GI-8VTF-CCT200T3-PSUL5	3500K 4000K 5000K selectable	120 - 277 V

select your accessories*

Part Number	Description	Image
GI-ACC-WPLV-8EB	8W emergency battery backup	
GI-ACC-12OCC	12V occupancy sensor	
GI-ACC-WR	steel mounting wire rope	

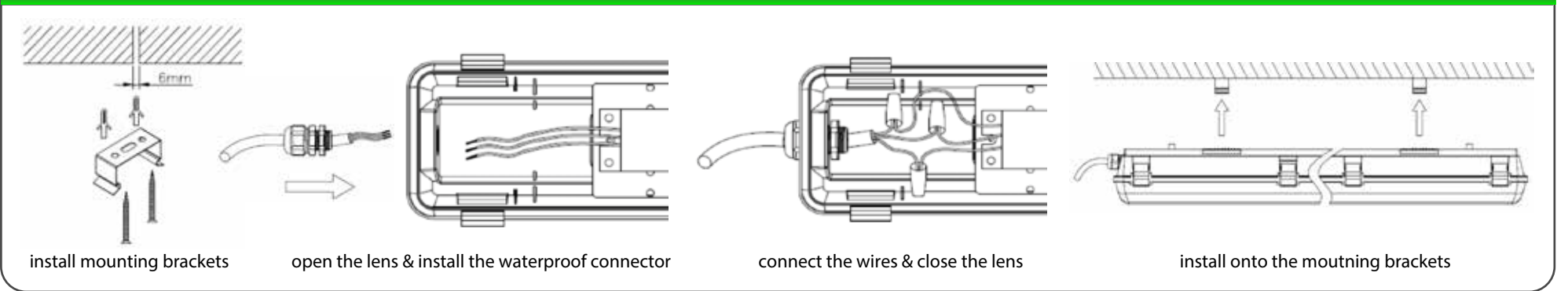
other

Warranty	Dimensions	Case QTY
6 years	94.5" (L) 4.81" (W) 3.7" (H)	1 pc

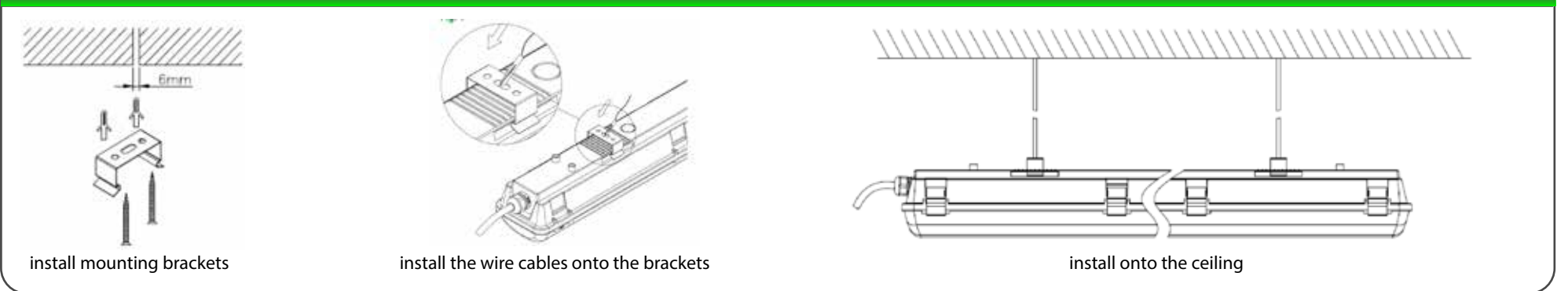
optional*



Surface Mounting Installation Guide

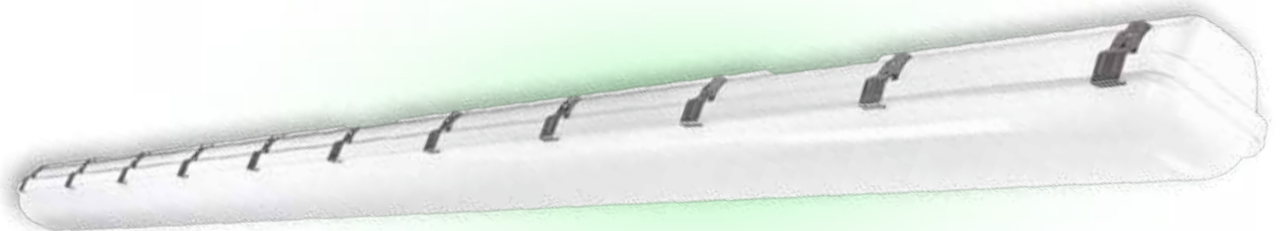


Suspended Mounting Installation Guide



Features

- Durable, UV resistant, polycarbonate lens
- 6 Year warranty
- Fully protected against water and other corrosive contaminants
- 0-10V Dimmable
- Chain and mounting bracket hardware included



Not all product variations listed on this page may be DLC qualified. Visit www.designlights.org/search to confirm qualification.

