



Que-2-TXT™
 Questions?
 scan to text us fast



LINEAR T8 / T12 RETROFIT LED LAMPS

5 FT
 fluorescent equal



specifications

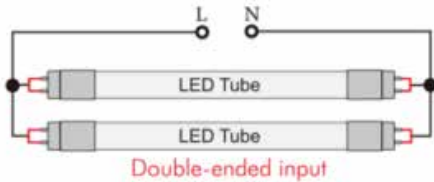
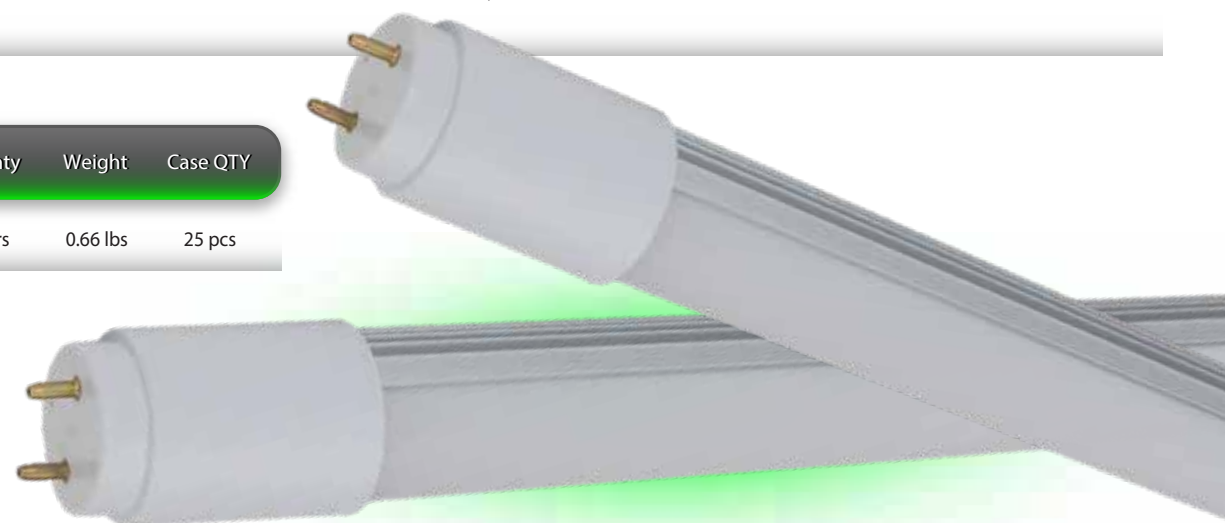
Consumption	Voltage	CRI	Lens	Heat Sink	L70 hours	Ambient Temp (F)	Power Factor	UL listing	THC	Beam Angle	Base	Dimensions
19W	100-277 V	82	plastic	aluminum	50,000	-4° - 104°	>0.9	damp location fully enclosed fixtures	<20%	320°	G13	59.60" x 1.023"

select your lamp

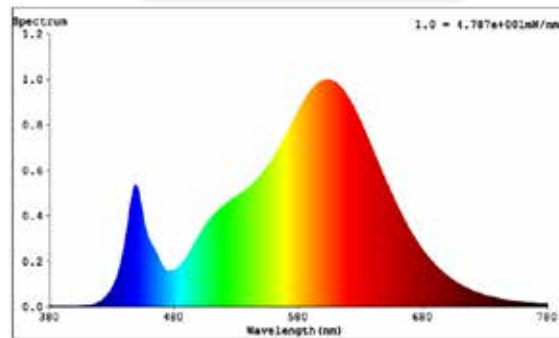
Part Number	Color Temp	Lumen Output	Efficacy
GI-5T8-W50-ULDW4	3000K	2,357	124 lm / W
GI-5T8-D50-ULDW4	4000K	2,357	124 lm / W
GI-5T8-C50-ULDW4	5000K	2,357	124 lm / W

other

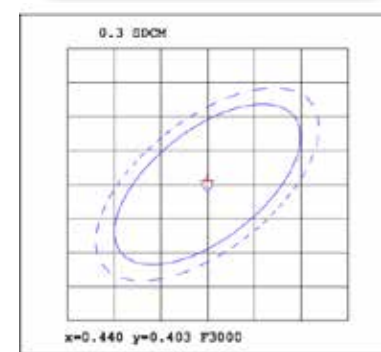
Warranty	Weight	Case QTY
6 years	0.66 lbs	25 pcs



Spectral Distribution



Chromaticity Diagram



- ### Features
- ▶ Shatterproof design (plastic lens)
 - ▶ 50,000 hour LED lifespan based on IES LM-80 results and TM-21 calculations
 - ▶ Double side powered

Not all product variations listed on this page may be DLC qualified. Visit www.designlights.org/search to confirm qualification.



/greenignite
 @greenignite



www.greenignite.com



info@greenignite.com



1-877-560-3779