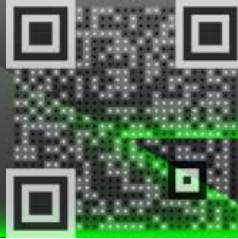
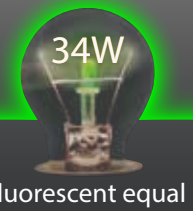




Que-2-TXT™
Questions?
scan to text us fast



4' LINEAR LED TUBE
MULTI-FUNCTIONAL



specifications

Consumption	Voltage	CRI	Lens	Heat Sink	L70 hours	Ambient Temp (F)	Power Factor	UL listing	THC	Beam Angle	Base	Dimensions
18W	100-277 V or ballast compatible*	72	frosted glass with shaterproof coating	PBT	50,000	-4° - 104°	>0.9	damp location fully enclosed fixtures	<20%	330°	G13	47.76" (L) 1.02" (D)

select your lamp

Part Number	Color Temp	Lumen Output	Efficacy
GI-4T8-D34GS-ULMF4	4000K	2,268	130 lm / w
GI-4T8-C34GS-ULMF4	5000K	2,268	130 lm / w

other

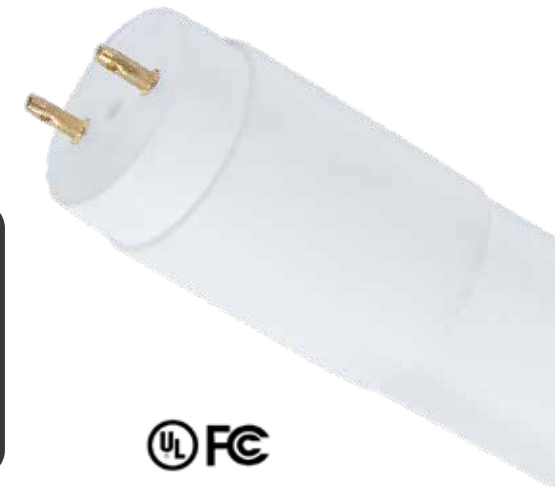
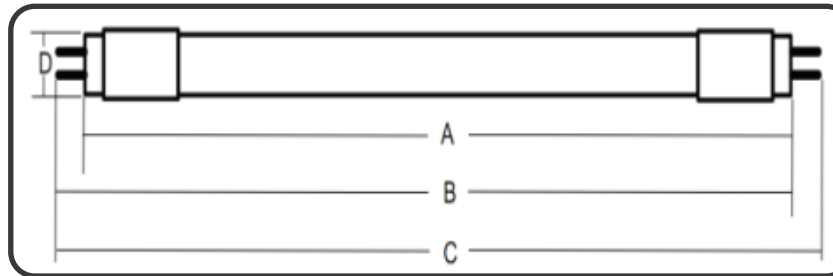
Warranty	Weight	Case QTY
6 years	0.54 lbs	30 pcs



Features

- ▶ Rated for fully enclosed fixtures
- ▶ 50,000 hour LED lifespan based on IES LM-80 results and TM-21 calculations
- ▶ Double side powered
- ▶ 0-10V Dimmable (with dimming system)
- ▶ Can be powered with or without a ballast

A. 47.17" | B. 47.45" | C. 47.76" | D. 1.02"



Not all product variations listed on this page may be DLC qualified. Visit www.designlights.org/search to confirm qualification.



/greenignite
@greenignite



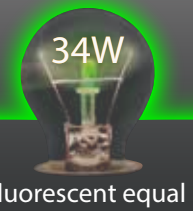
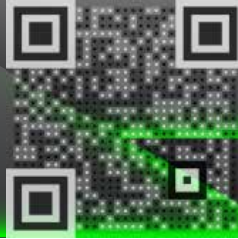
www.greenignite.com



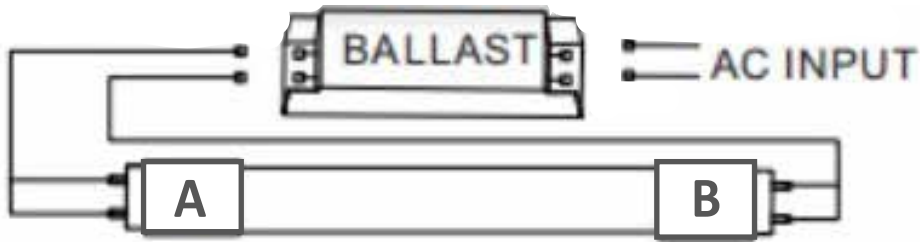
info@greenignite.com



1-877-560-3779

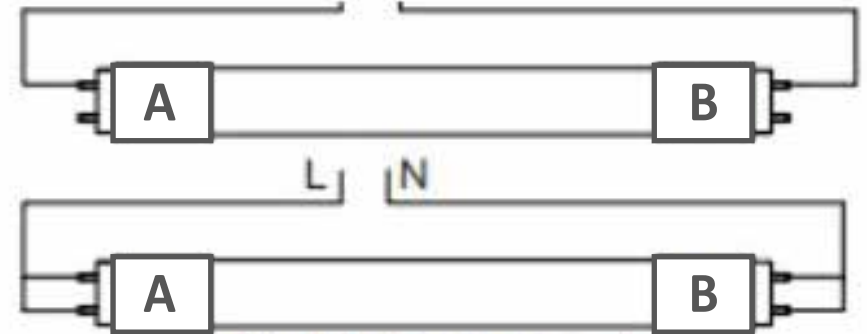


BALLAST COMPATIBLE WIRING DIAGRAM



Input Voltage : Based on the ballast used

DIRECT WIRE ONLY WIRING DIAGRAM



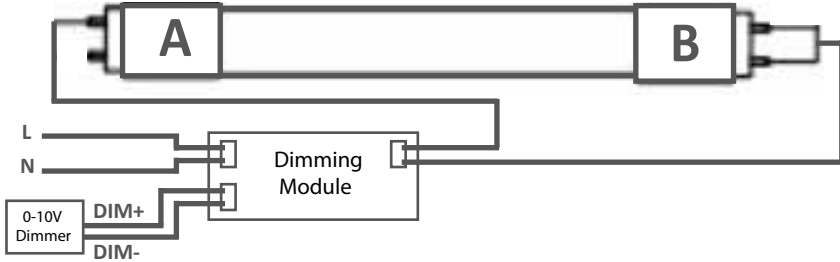
Double Ended Input



Single Ended Input

Input Voltage : AC120-277V 50/50Hz

DIRECT WIRE ONLY WITH 0-10V DIMMING SYSTEM



Not all product variations listed on this page may be DLC qualified. Visit www.designlights.org/search to confirm qualification.

