



specifications

Lens	CRI	THD	Voltage	Material	L70 hours	SP	Ambient Temp (F)	Power Factor	UL listing	Dimensions
polycarbonate	>70	<0.2	120 - 277 V ⚡	die-cast aluminum	50,000	10 KV optional	-40° - 104°	> 0.9	damp location	48" x 3.36" x 3.9"

select your lamp

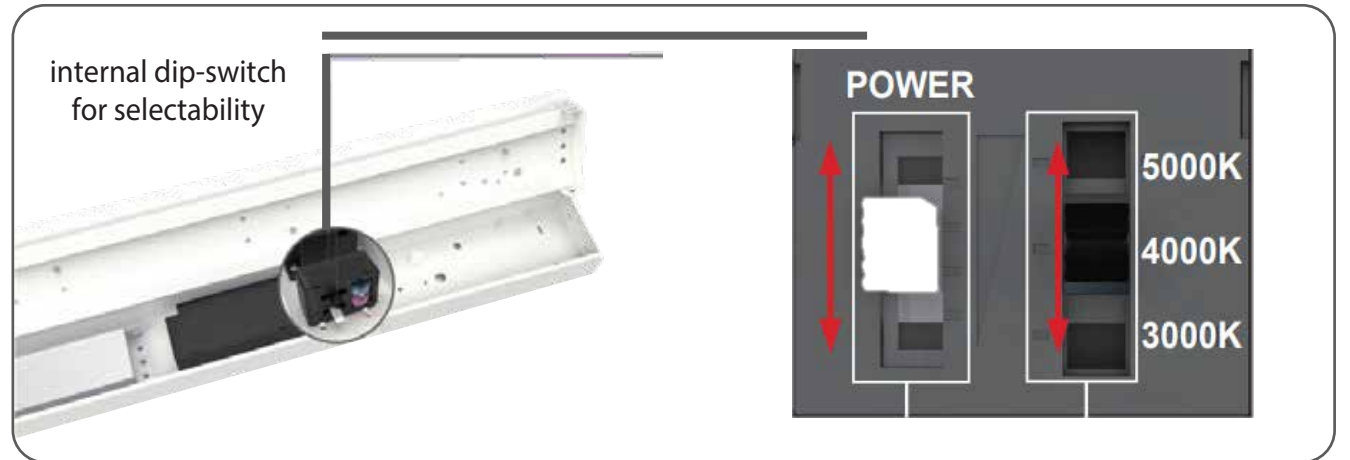
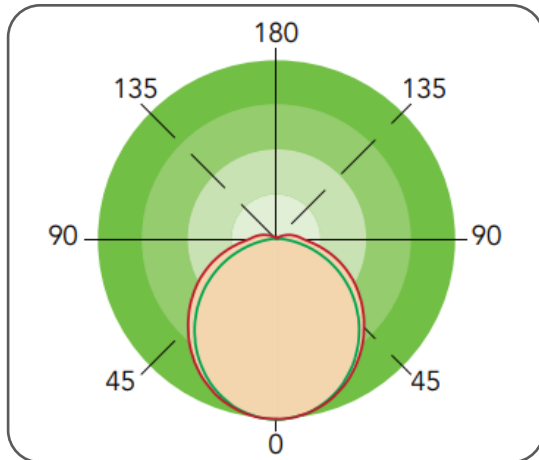
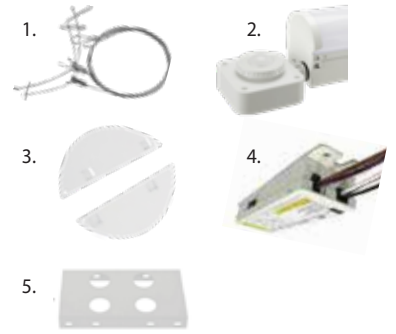
Part Number	Color Temp	Lumen Output	Efficacy	Consumption
GI-4SLF-CCT70PS-UL4	30K 40K 50K selectable	35W - 4,900 LM 28W - 4,000 LM 21W - 3,150 LM 15W - 2,350 LM	138 lm / W	35W / 28W / 21W / 15W selectable
GI-4SLF-CCT90PS-UL4	30K 40K 50K selectable	45W - 6,200 LM 36W - 5,000 LM 27W - 3,800 LM 18W - 2,700 LM	138 lm / W	45W / 36W / 27W / 18W selectable

select your accessories\*

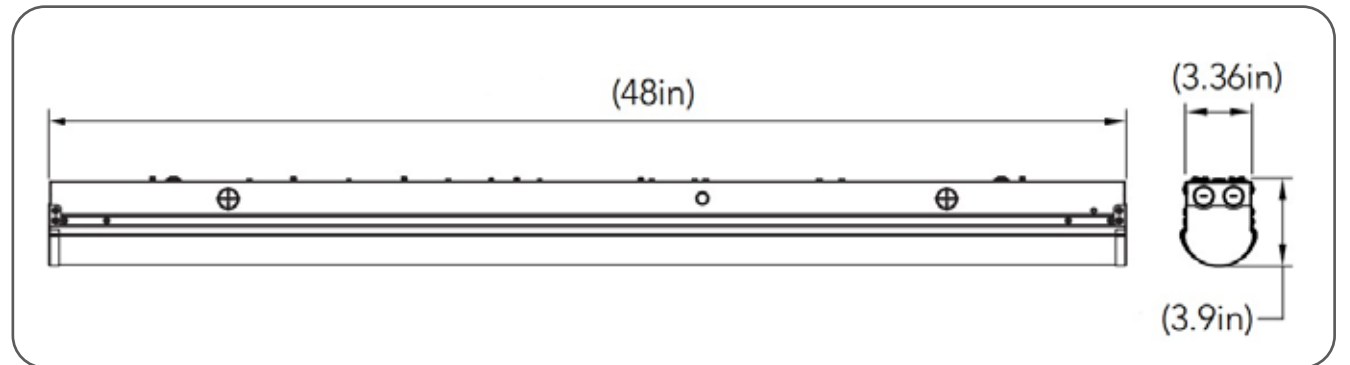
Part Number	Description
GI-ACC-WR	steel mounting wire rope
GI-ACC-OCCS	occupancy sensor - twist on
GI-ACC-SMP	steel mounting plate
GI-ACC-EB	emergency battery back up
GI-ACC-RC	row connector

other

Warranty	Weight	Case QTY
6 years	5.88 lbs	6 pc



- Features**
- Can be surface or chain mounted.
  - Standard 1-10V dimming.
  - 1/2" Knockouts on the side of the fixture for bi-level motion sensors
  - 1/2" End cap knockouts for connecting multiple fixtures



Not all product variations listed on this page may be DLC qualified. Visit [www.designlights.org/search](http://www.designlights.org/search) to confirm qualification.

