



specifications

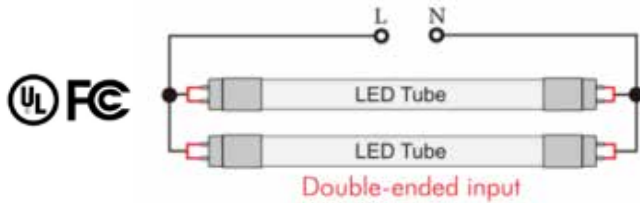
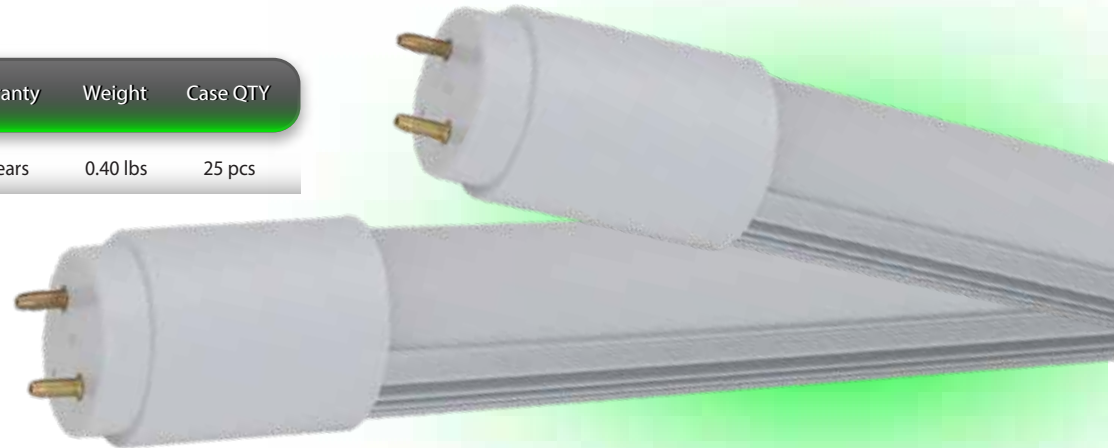
Consumption	Voltage	Base	Lens	Heat Sink	L70 hours	Ambient Temp (F)	Power Factor	UL listing	CRI	THC	Beam Angle	Dimensions
12W	100-277 V ⚡	G13	polycarbonate	aluminum	50,000	-4° - 113°	>0.9	damp location fully enclosed fixtures	83	<20%	320°	35.433" x 1.102"

select your lamp

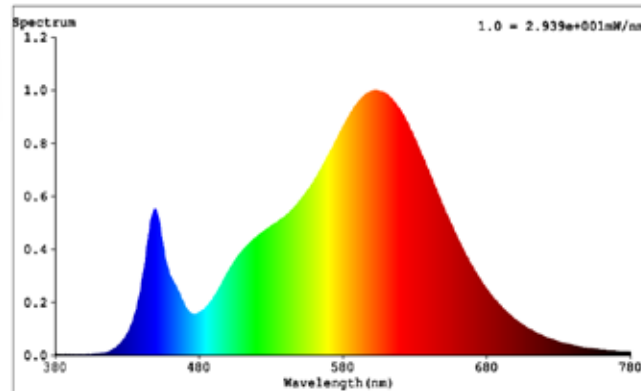
Part Number	Color Temp	Efficacy	Lumen Output
GI-3T8-W30-ULDW4	3000K	122 lm / w	1,464
GI-3T8-D30-ULDW4	4000K	122 lm / w	1,464
GI-3T8-C30-ULDW4	5000K	122 lm / w	1,464

other

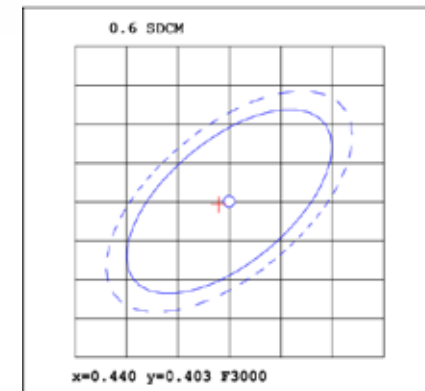
Warranty	Weight	Case QTY
6 years	0.40 lbs	25 pcs



Spectral Distribution



Chromaticity Diagram



**Features**

- Rated for fully enclosed fixtures.
- Shatterproof design.
- 50,000 hour LED lifespan based on IES LM-80 results and TM-21 calculations.
- Double-sided power

Not all product variations listed on this page may be DLC qualified. Visit [www.designlights.org/search](http://www.designlights.org/search) to confirm qualification.

