

specifications

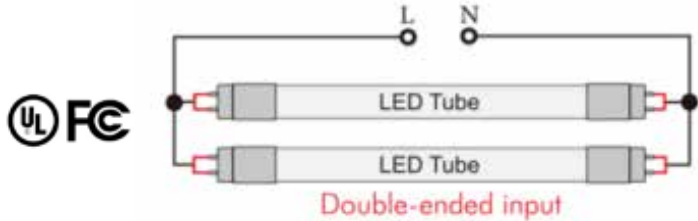
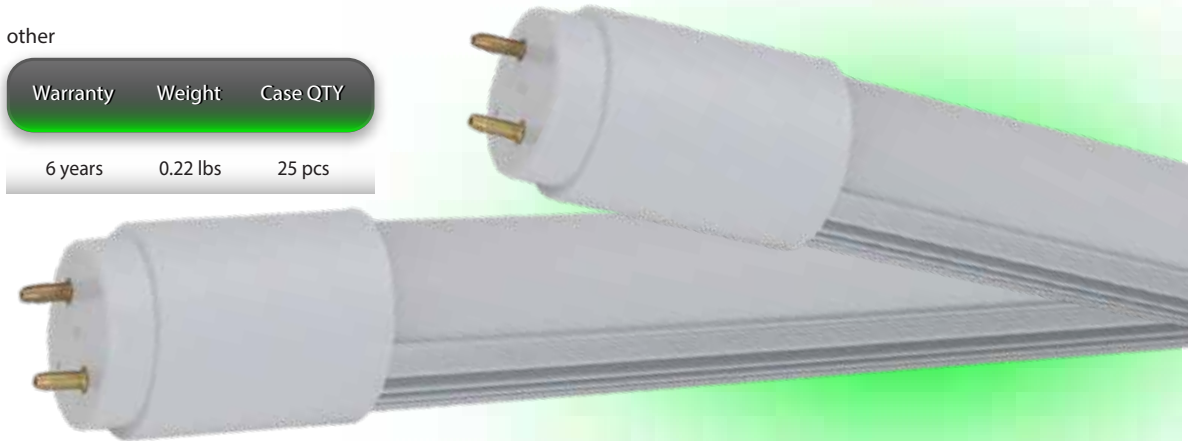
Consumption	Voltage	Base	Lens	Heat Sink	L70 hours	Ambient Temp (F)	Power Factor	UL listing	CRI	THC	Beam Angle	Dimensions
6W	100-277 V ⚡	G13	polycarbonate	aluminum	50,000	-4° - 113°	>0.9	damp location fully enclosed fixtures	83	<20%	320°	17.72" x 1.102"

select your lamp

Part Number	Color Temp	Efficacy	Lumen Output
GI-15T8-W14-ULDW4	3000K	123 lm / w	738
GI-15T8-D14-ULDW4	4000K	123lm / w	738
GI-15T8-C14-ULDW4	5000K	123 lm / w	738

other

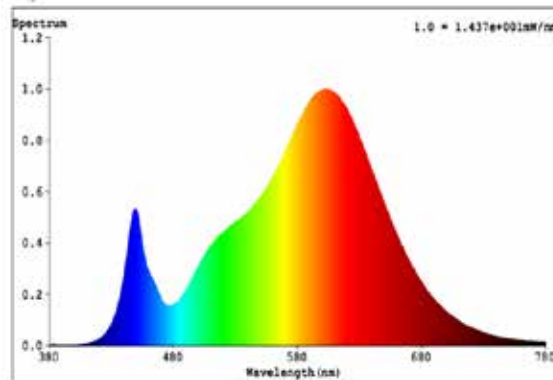
Warranty	Weight	Case QTY
6 years	0.22 lbs	25 pcs



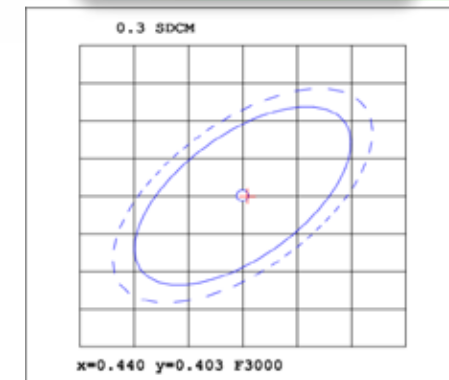
Features

- Rated for fully enclosed fixtures.
- Shatterproof design.
- 50,000 hour LED lifespan based on IES LM-80 results and TM-21 calculations.

Spectral Distribution



Chromaticity Diagram



Not all product variations listed on this page may be DLC qualified. Visit www.designlights.org/search to confirm qualification.

