

Specifications

CRI	Ambient Temp (F)	Color Temp	Housing	Lens	IP Rating	Mounting Bracket	Gross Weight	Beam Angle	Warranty	Case Quantity
80	-40° - 149°	5000K	copper-free aluminum housing	tempered glass	IP 66	aluminum/SUS 304	compact (C) 23.15 lbs large (L) 27.78 lbs	120°	6 years	1 pcs

select your fixture

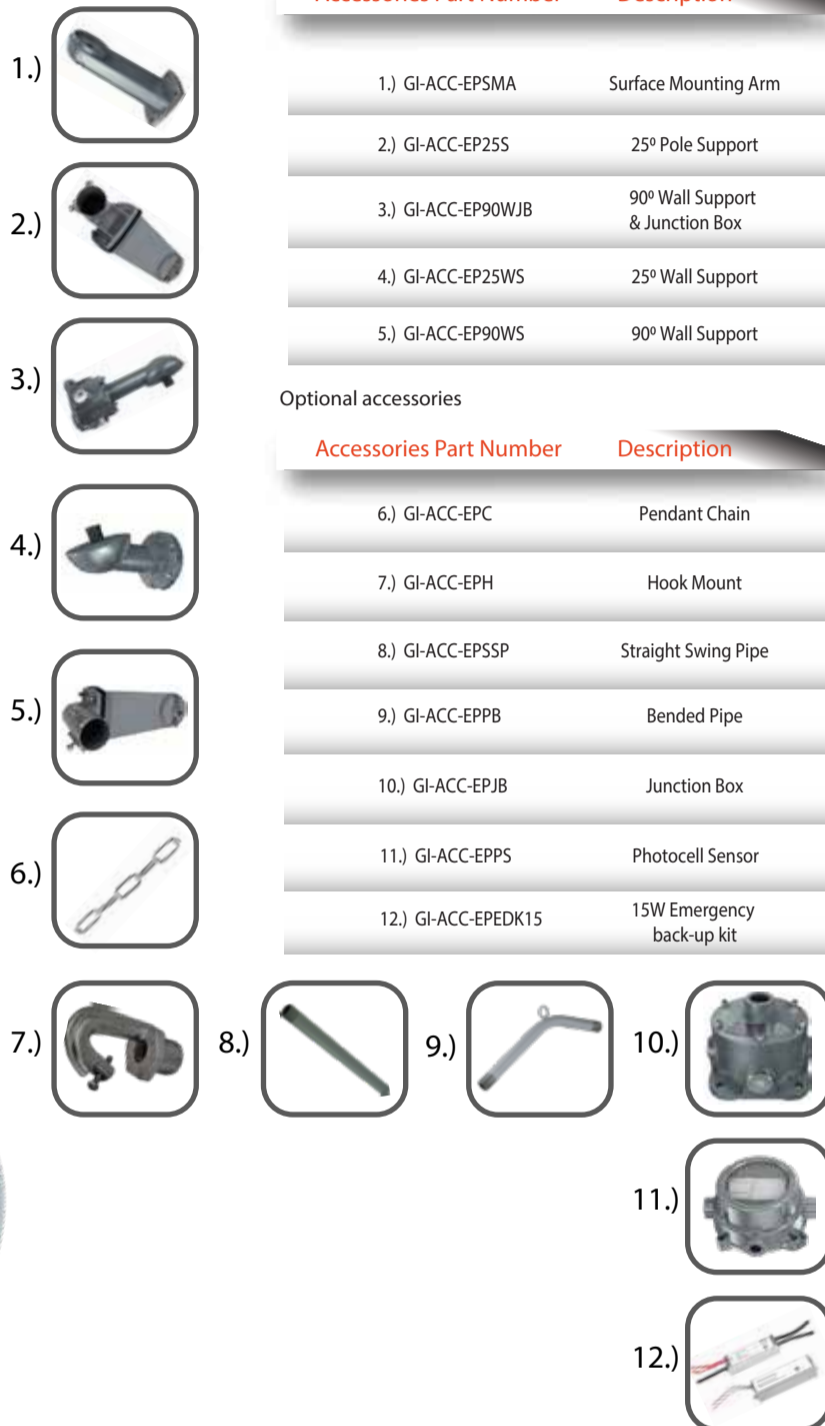
Part Number	Consumption	Voltage	Lumen Output	Dimensions	Voltage
GI-EPQ-C100C-G5	20W	2,800	140 LM / W	15" x 16"	AC 100-277 V DC 12-48 V
GI-EPQ-C175C-G5	40W	5,600	140 LM / W	15" x 16"	AC 100-277 V DC 12-48 V
GI-EPQ-C175C-480G5	40W	5,600	140 LM / W	15" x 16"	AC 200-480 V
GI-EPQ-C250C-G5	60W	8,400	140 LM / W	15" x 16"	AC 100-277 V DC 12-48 V
GI-EPQ-C250C-480G5	60W	8,400	140 LM / W	15" x 16"	AC 200-480 V
GI-EPQ-C250HOC-G5	80W	11,200	140 LM / W	15" x 16"	AC 100-277 V DC 12-48 V
GI-EPQ-C250HOC-480G5	80W	11,200	140 LM / W	15" x 16"	AC 200-480 V
GI-EPQ-C400L-G5	100W	14,000	140 LM / W	15" x 18"	AC 100-277 V DC 12-48 V
GI-EPQ-C400L-480G5	100W	14,000	140 LM / W	15" x 18"	AC 200-480 V
GI-EPQ-C750L-G5	150W	21,000	140 LM / W	15" x 18"	AC 100-277 V DC 12-48 V
GI-EPQ-C750L-480G5	150W	21,000	140 LM / W	15" x 18"	AC 200-480 V
GI-EPQ-C1000ECL-G5	200W	28,000	140 LM / W	15" x 18"	AC 100-277 V DC 12-48 V
GI-EPQ-C1000ECL-480G5	200W	28,000	140 LM / W	15" x 18"	AC 200-480 V

Optional mounts

Accessories Part Number	Description
1.) GI-ACC-EPSMA	Surface Mounting Arm
2.) GI-ACC-EP25S	25° Pole Support
3.) GI-ACC-EP90WJB	90° Wall Support & Junction Box
4.) GI-ACC-EP25WS	25° Wall Support
5.) GI-ACC-EP90WS	90° Wall Support

Optional accessories

Accessories Part Number	Description
6.) GI-ACC-EPC	Pendant Chain
7.) GI-ACC-EPH	Hook Mount
8.) GI-ACC-EPSSP	Straight Swing Pipe
9.) GI-ACC-EPPB	Bended Pipe
10.) GI-ACC-EPJB	Junction Box
11.) GI-ACC-EPPS	Photocell Sensor
12.) GI-ACC-EPEDK15	15W Emergency back-up kit



Classifications

ATEX Marking ATEX
II 3G Ex nR IIC T6...T4 Gc
II 2D Ex tb IIIC T80°C...T130°C Db

IECEx Marking IECEx
Ex nR IIC T6...T4 Gc
Ex tb IIIC T80°C...T130°C Db

EITV Marking UL844 (North American)
Class I, Division 2, Groups A,B,C,D
Class II, Division 1, Groups E,F,G
Class II, Division 1, Groups F, G
Class III

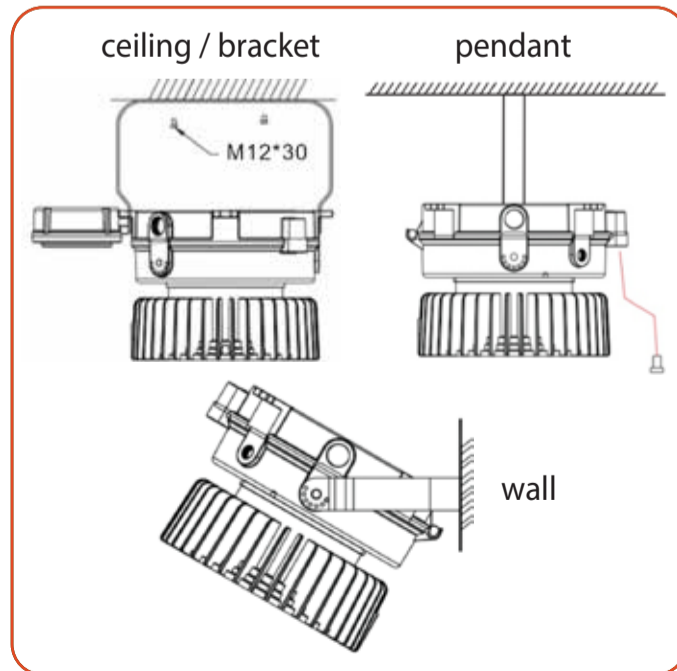
Other Rating
IP66
IK10



Top hat is compatible with Eaton's Champ VMV series & Appleton's Contender series

Features

- ▶ Rated for high temperatures, humidity, dust and vapor locations
- ▶ Built-in motion sensor
- ▶ Heavy duty & high impact resistant
- ▶ 0-10V Dimmable
- ▶ 100,000 Hour lifespan
- ▶ Built for a variety of purposes such as spot light, tunnel light, and general illumination in hazardous locations
- ▶ 10kVA Surge protection



Not all product variations listed on this page may be DLC qualified. Visit www.designlights.org/search to confirm qualification.