

Specifications

| CRI | Ambient Temp (F) | Voltage | Housing | Color Temp | IP Rating | Efficacy | Gross Weight | Hardware | Warranty | Case Quantity |
|-----|------------------|-------------|-----------------------|------------|-----------|----------|--------------|-----------------|----------|---------------|
| 80 | -40° - 104° | 100-277 V ⚡ | SPCC +AL6063 PC cover | 5000K | IP66 | 130 LM/W | 46.3lbs | stainless steel | 6 years | 1 pcs |

select your fixture

| Part Number | Consumption | Lumen Output | Dimensions |
|-----------------------|-------------|--------------|----------------------|
| GI-EP22HB-C175-C1D2 | 40W | 5,200 | 25.2" x 23.8" x 3.7" |
| GI-EP22HB-C250-C1D2 | 60W | 7,800 | 25.2" x 23.8" x 3.7" |
| GI-EP22HB-C250HO-C1D2 | 80W | 10,400 | 25.2" x 23.8" x 3.7" |
| GI-EP22HB-C400-C1D2 | 120W | 15,600 | 25.2" x 23.8" x 3.7" |

Included accessories

| Accessories Part Number | Description |
|-------------------------|--------------------------|
| 1.) GI-ACC-EPPK | pendant mounting kit |
| 2.) GI-ACC-EPRK | recessed mounting kit |
| 3.) GI-ACC-EP1CB | ceiling mounting bracket |

Optional accessories

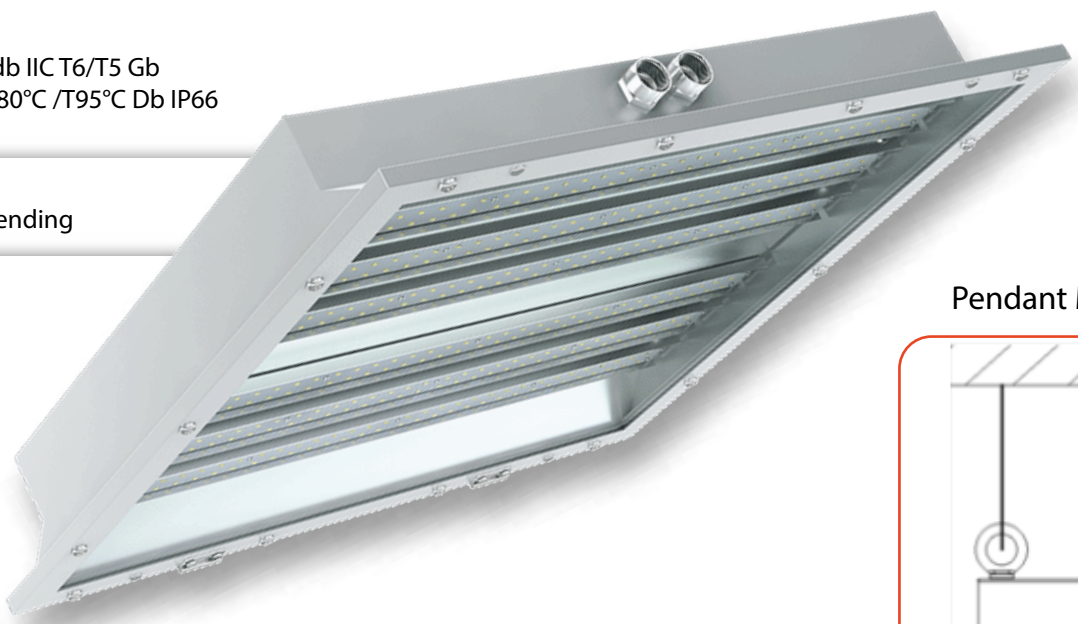
| Accessories Part Number | Description |
|-------------------------|-----------------------------------|
| 4.) GI-ACC-EPJB | junction box |
| 5.) GI-ACC-EPED15 | 15W Emergency driver + controller |
| 6.) GI-ACC-EPPS | photocell sensor |



Certifications

Class | Division 2, Groups A, B, C, D
 Class II Division 1, Groups F, G
 Class III
 ATEX Marking
 II2 G Ex eb mb db IIC T6/T5 Gb
 II2 D Ex tb IIIC T80°C /T95°C Db IP66

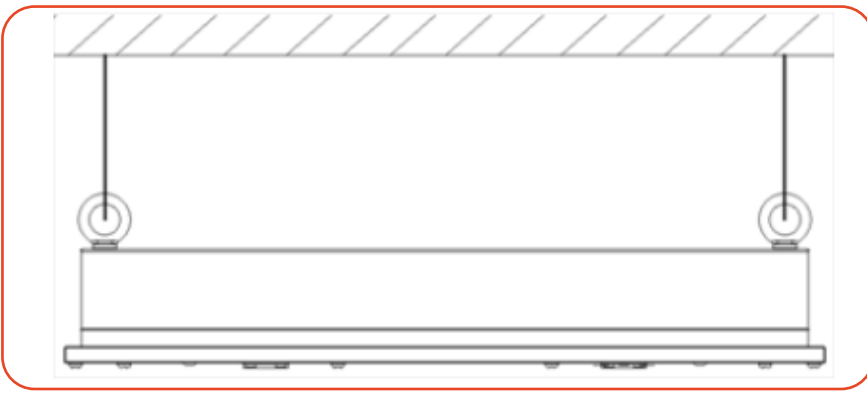
Other Rating
IP66, IK10, UL Pending



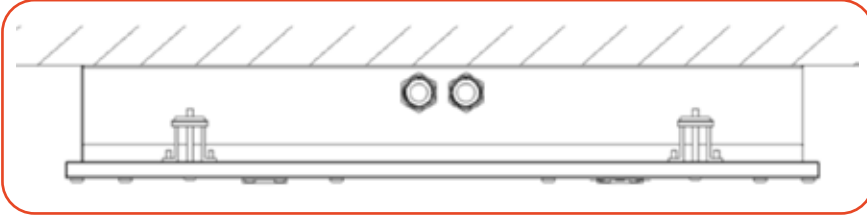
Features

- Rated for high temperatures, humidity, dust and vapor locations
- Light weight design
- Heavy duty & high impact resistant
- 0-10V Dimmable
- Smooth housing allows for easy cleaning/maintenance
- 120° Beam angle
- 10kVA Surge protection

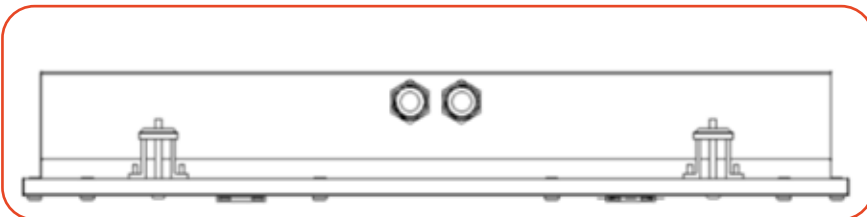
Pendant Mounting (default: Includes chains & eyebolts)



Ceiling Mounting



Recessed Mounting



Not all product variations listed on this page may be DLC qualified. Visit www.designlights.org/search to confirm qualification.