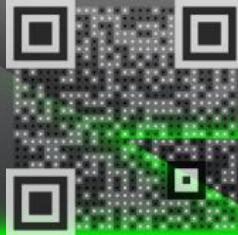




Que-2-TXT™
Questions?
scan to text us fast



VAPOR PROOF LED FIXTURE



2 FT

fluorescent equal

specifications

Lens	CRI	Finish	Consumption	Lumen Output	Efficacy	Material	L70 hours	SP	Ambient Temp (F)	Power Factor	UL listing	THD
polycarbonate	>70	white	70 W	9,400	134 lm / W	die-cast aluminum	50,000	10 KV optional	-40° - 113°	> 0.9	wet location IP 66	<0.2

Part Number	Color Temp	Voltage	Weight	Dimensions
GI-2VTF-C140T3-UL4	5000K	120 - 277 V	8.034 lbs	23.6" x 6.8" x 37"

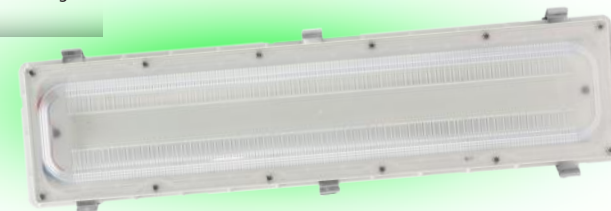
select your accessories*

Part Number	Description
GI-ACC-OCSS	occupancy sensor - twist on
GI-ACC-EB	emergency battery back up
GI-ACC-VHOOK	v hook pendant mounting

other

Warranty	Case QTY
6 years	1 pc

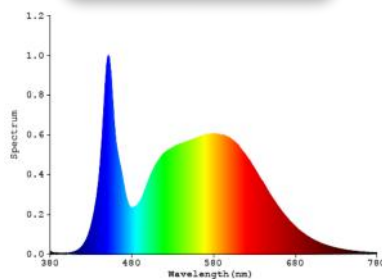
optional*



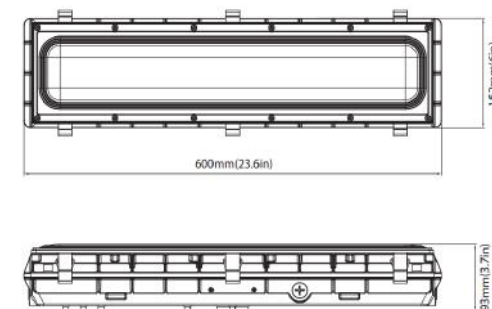
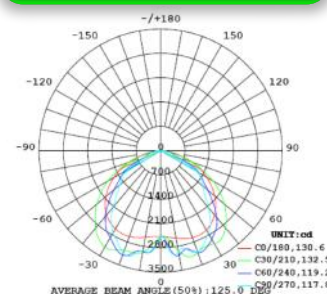
Features

- Designed with excellent heat dissipation
- Standard 1-10V dimming
- Optional occupancy sensor allows for security and energy saving

Vertical Isolux Plot



Luminous Intensity Diagram



Not all product variations listed on this page may be DLC qualified. Visit www.designlights.org/search to confirm qualification.



/greenignite
@greenignite



www.greenignite.com



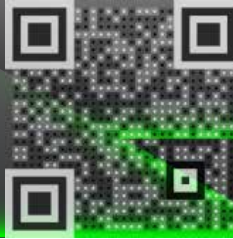
info@greenignite.com



1-877-560-3779



Que-2-TXT™
Questions?
scan to text us fast



VAPOR PROOF LED FIXTURE

190W



2 FT

fluorescent equal

specifications

Lens	CRI	Finish	Consumption	Lumen Output	Efficacy	Material	L70 hours	SP	Ambient Temp (F)	Power Factor	UL listing	THD
polycarbonate	>70	white	95 W	13,000	137 lm / W	die-cast aluminum	50,000	10 KV optional	-40° - 113°	> 0.9	wet location IP 66	<0.2

Part Number	Color Temp	Voltage	Weight	Dimensions
GI-2VTF-C190T3-UL4	5000K	120 - 277 V	7.723 lbs	23.6" x 6.8" x 37"

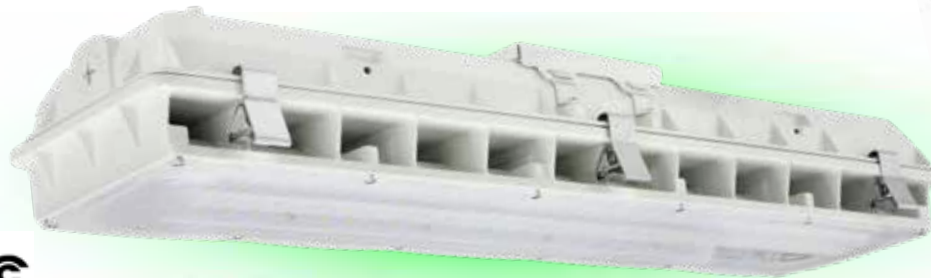
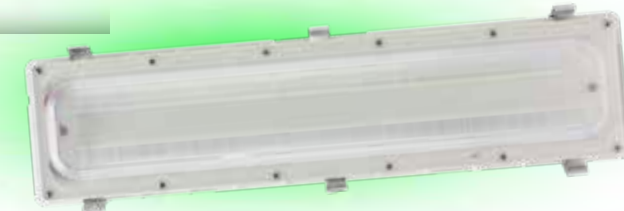
select your accessories*

Part Number	Description
GI-ACC-OCSS	occupancy sensor - twist on
GI-ACC-EB	emergency battery back up
GI-ACC-VHOOK	v hook pendant mounting

other

Warranty	Case QTY
6 years	1 pc

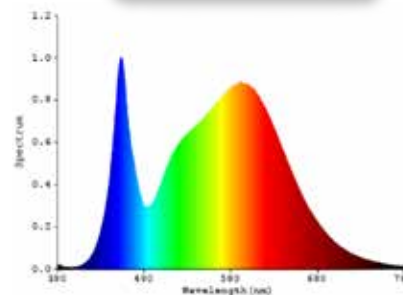
optional*



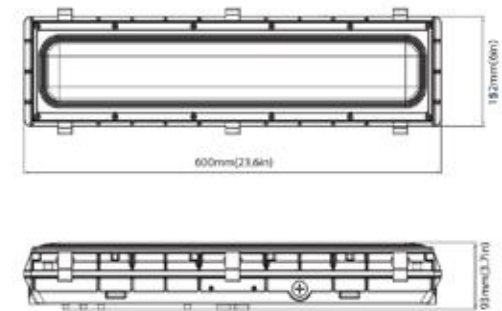
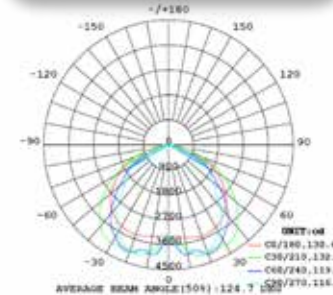
Features

- Designed with excellent heat dissipation
- Standard 1-10V dimming
- Optional occupancy sensor allows for security and energy saving

Vertical Isolux Plot



Luminous Intensity Diagram



Not all product variations listed on this page may be DLC qualified. Visit www.designlights.org/search to confirm qualification.



/greenignite
@greenignite



www.greenignite.com



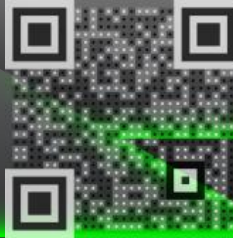
info@greenignite.com



1-877-560-3779



Que-2-TXT™
Questions?
scan to text us fast



VAPOR PROOF LED FIXTURE

190W



2 FT

fluorescent equal

specifications

Lens	CRI	Finish	Consumption	Lumen Output	Efficacy	Material	L70 hours	SP	Ambient Temp (F)	Power Factor	UL listing	THD
polycarbonate	>70	white	95 W	13,000	137 lm / W	die-cast aluminum	50,000	10 KV optional	-40° - 113°	> 0.9	wet location IP 66	<0.2

Part Number	Color Temp	Voltage	Weight	Dimensions
GI-2VTF-C190T3-UL4	5000K	120 - 277 V	7.723 lbs	23.6" x 6.8" x 37"

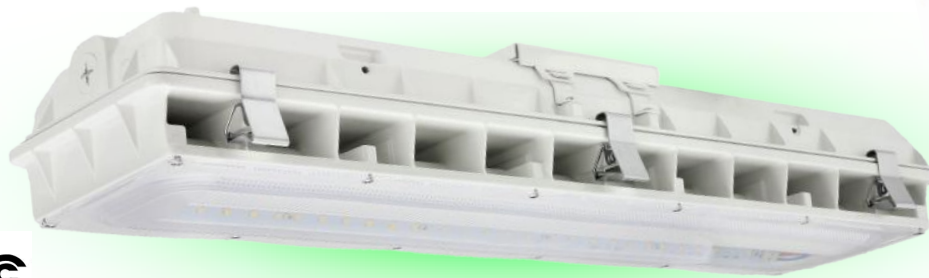
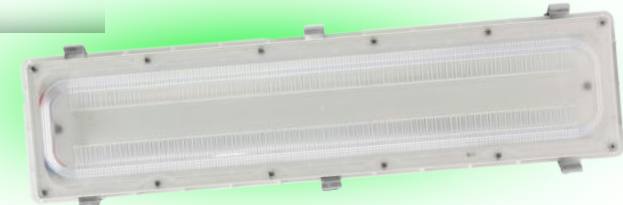
select your accessories*

Part Number	Description
GI-ACC-OCCS	occupancy sensor - twist on
GI-ACC-EB	emergency battery back up
GI-ACC-VHOOK	v hook pendant mounting

other

Warranty	Case QTY
6 years	1 pc

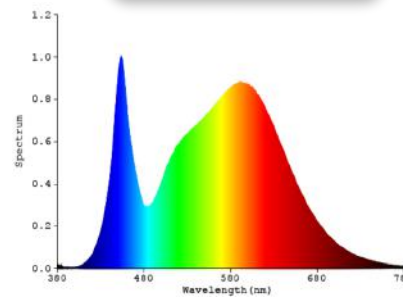
optional*



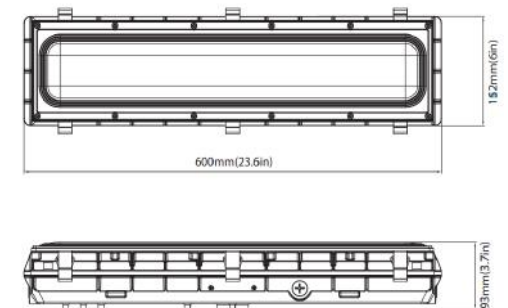
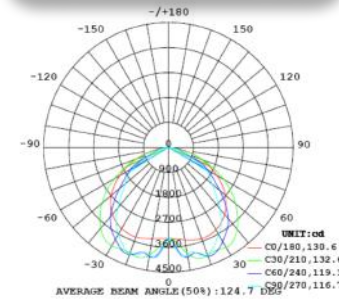
Features

- Designed with excellent heat dissipation
- Standard 1-10V dimming
- Optional occupancy sensor allows for security and energy saving

Vertical Isolux Plot



Luminous Intensity Diagram



Not all product variations listed on this page may be DLC qualified. Visit www.designlights.org/search to confirm qualification.



/greenignite
@greenignite

www.greenignite.com

info@greenignite.com

1-877-560-3779