



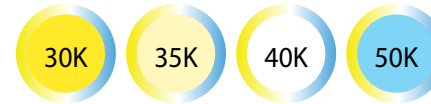
specifications

Efficacy	Voltage	Position	CRI	Base	Lens	Heat Sink	L70 hours	Ambient Temp (F)	Power Factor	UL listing	THD	Beam Angle
124 lm/W	120-277 V 	horizontal	>80	2G11	poly-carbonate	aluminum	50,000	-4° - 104°	>0.9	damp location	<20%	160°

*approved electronic ballasts

select your lamp

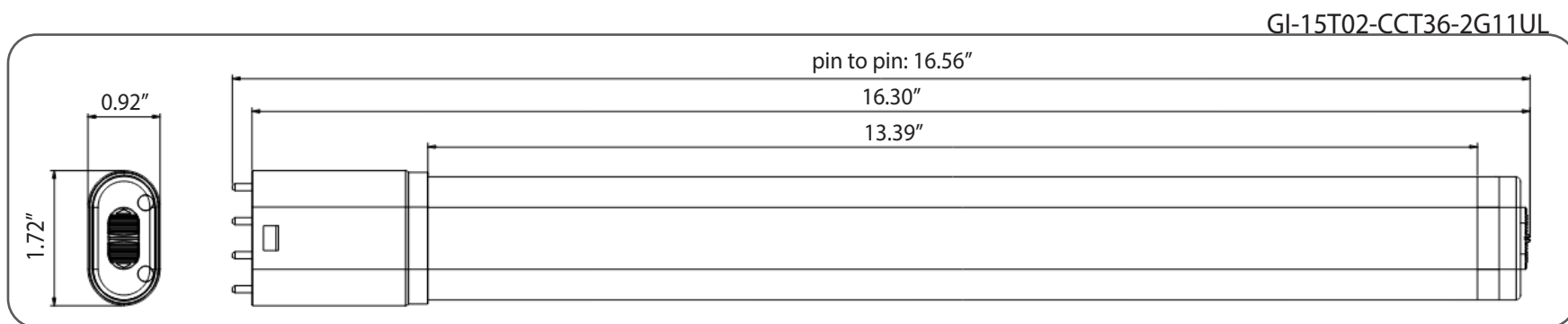
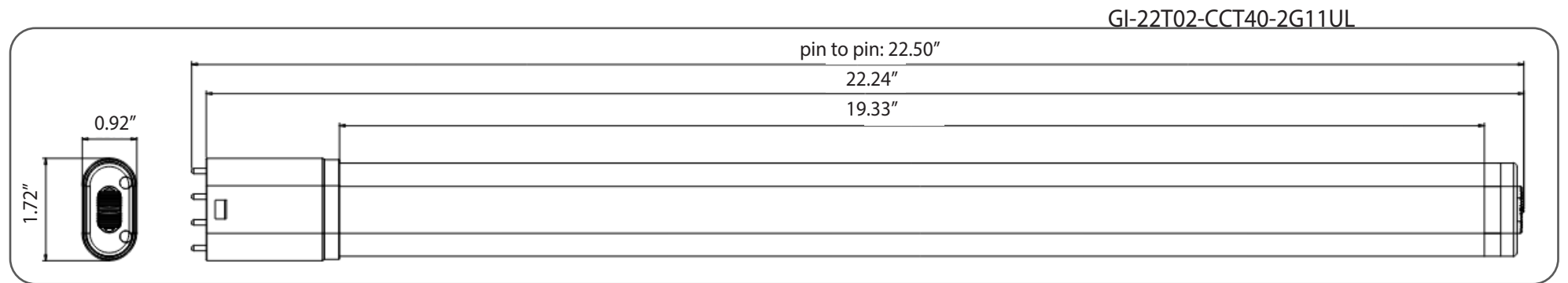
Part Number	Color Temp	Lumen Output	Consumption	Dimensions
GI-15T02-CCT36-2G11UL	selectable	1,950 lm	16W	16.56" x 1.72" x 0.92"
GI-22T02-CCT40-2G11UL	selectable	2,100 lm	17W	22.50" x 1.72" x 0.92"



4-Color Power Selectability

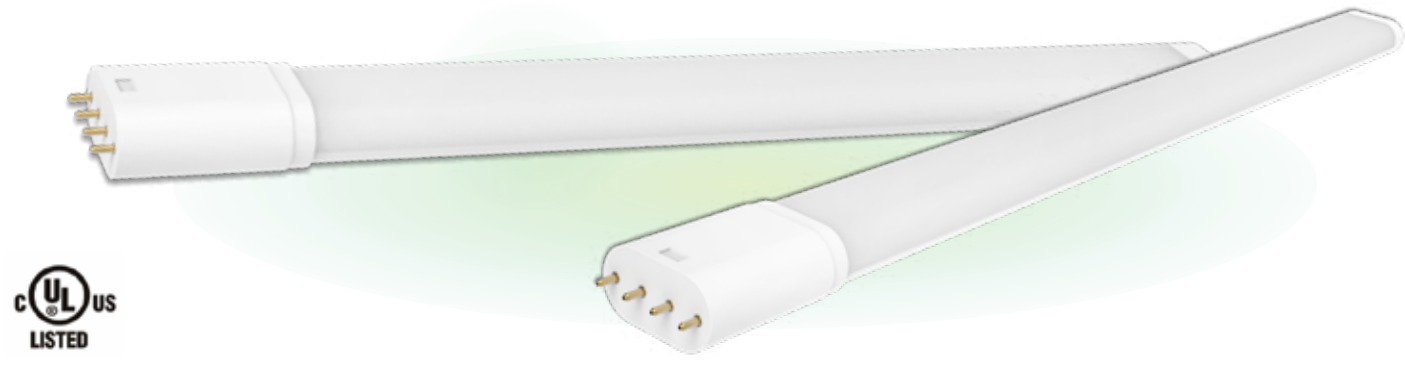
other

Warranty	Weight	Case QTY
6 years	0.75 lbs	25 pcs



Features

- Mimics traditional fluorescent lamp in light output and shape for seamless retrofit.
- 50,000 hour LED lifespan based on IES LM-80 results and TM-21 calculations
- Omni-directional
- Non-dimmable



Not all product variations listed on this page may be DLC qualified. Visit www.designlights.org/search to confirm qualification.

